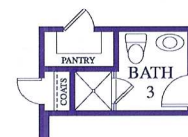
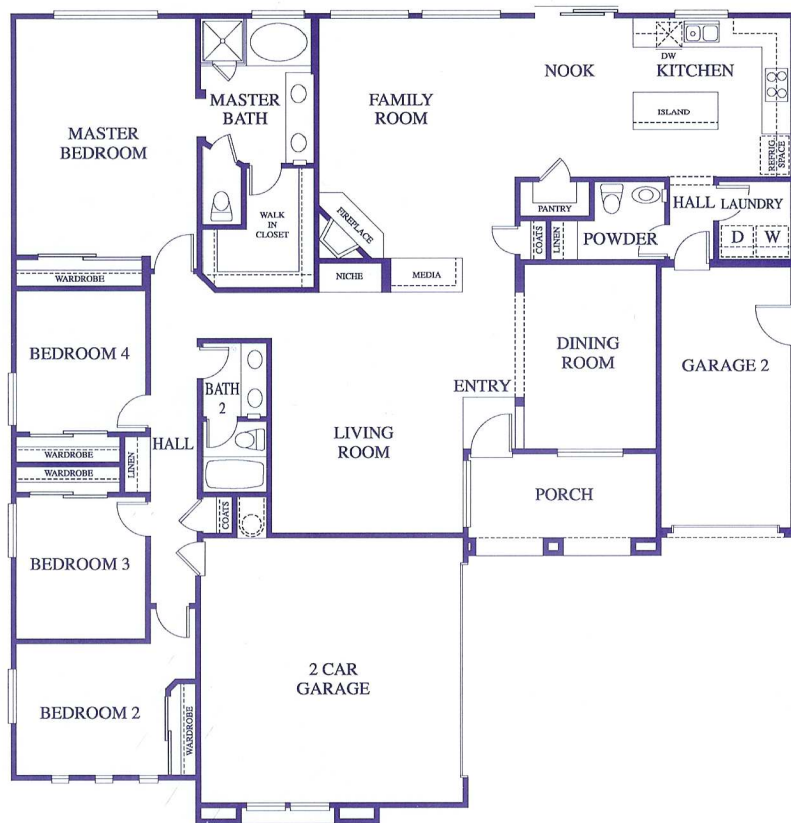




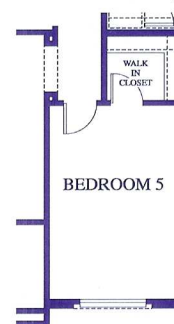
# Sterling Green III

4294 Soto Grande Circle • Corona, CA 92883  
(909) 278-8812

RESIDENCE 2
4 Bedrooms
2.5 Baths
3-Car Garage
Approx. 2,337 Square Feet



SHOWER AT POWDER ROOM OPT.



OPTIONAL BEDROOM 5  
ADDS 210 SQ. FT. LIVING SPACE

07/10/02



In a continuous effort to make improvements, Forecast Homes reserves the right to change prices, optional items, floor plans, features, exterior designs, materials and specifications without prior notice or obligation. All square footages are approximate. Floor plans are not to scale.